



CYCLACEL

Translating cancer biology into medicines

NASDAQ CYCC October 2018

Disclaimer



This presentation contains forward-looking statements within the meaning of the “safe harbor” provisions of the Private Securities Litigation Reform Act of 1995 about financial results and estimates, business strategy, clinical trial plans and research and development programs of Cyclacel Pharmaceuticals, Inc. By their nature, forward-looking statements and forecasts involve risks and uncertainties because they relate to events and depend on circumstances that will occur in the future. For a further list and description of the risks and uncertainties the Company faces, please refer to our most recent Annual Report on Form 10-K and other periodic and current filings that have been filed with the Securities and Exchange Commission and are available at www.sec.gov. The information in this presentation is current as of this date. Cyclacel does not take any responsibility to update such information.

- Apply deep understanding of cell cycle biology to disrupt
 - a. cancer cell **resistance**
 - b. **DNA repair** or evasion
- Pioneer in Cyclin Dependent Kinase inhibitors; rationally designed clinical programs in leukemias & breast cancer
- Focus on molecularly-defined patient populations (precision Rx)
- Experienced management; estimated capital through Q1 2020

CYC065

- CDK inhibitor with Proof of Mechanism in Phase 1 data
- 2L CLL venetoclax combination addressing large market

Sapacitabine

- Oral nucleoside analogue, unique MoA in DNA damage response in BRCA +ve breast cancer
- Phase 1b/2 olaparib combination study enrolling

CYC140

- PLK inhibitor with compelling preclinical data in liquid & solid cancers

Development Pipeline



Program CYC...	Description	Preclinical	Phase 1	Phase 2	Pivotal	Rights
065	Solid tumors (FIH)		Part 2			Worldwide
	2L R/R CLL + Bcl-2 inhibitor		065 + venetoclax			
	Solid tumors Cyc E, MYCN, Mcl-1		Ph 1/2			
	Oral formulation	CMC	Ph 1 /2			
sapa-citabine	DDR: BRCA +ve Breast cancer + PARP inhibitor		sapa + olaparib Ph 1b/2			Worldwide (except Japan)
	AML (SEAMLESS Ph 3)		EU national sci. advice; submissibility			
140	Blood cancers (FIH)		Ph 1			Worldwide

Current
 Planned

\$107 bn in 2015 (+12% YoY). *Est. ~\$150 bn in 2020*

Single Rx targeting mutations: validated approach

...↑ response but cures/long stable disease elusive...

EVOLUTION OF RESISTANCE TO CANCER Rx OR ADDICTION TO CANCER GENES

- Strategy: combine approved Rx that is no longer working with resistance-modifying Rx or
- Rx that breaks addiction to oncogenes (MYC, cyclins)

Suppressing Resistance Proteins



Bcl-2, Bcl-XL, Mcl-1:

↑ *expression: survival & growth of cancer cells*

- **Bcl-2** > **venetoclax** approved in 2L CLL
- Bcl-XL > investigational drugs but safety issues
- **Mcl-1** > transcriptional CDKi, incl. **CYC065**

*Competitive race to develop Rx that suppress Mcl-1
one of most frequently overexpressed cancer genes*

Indication Rationale: 2L CLL (post BTKi)



1L US incidence 21,000; nearly all survivors receive 2L

Venetoclax does not ↓ Mcl-1; previous transcriptional CDKi are active in CLL

Preclinical evidence of synergy for venetoclax + CYC065*

CYC065 1st CDKi to durably suppress ↓ Mcl-1 in patients

“Double-Hit” strategy to suppress Bcl-2 + Mcl-1

CYC065 + venetoclax study activated

** Source: Chen et al AACR 2018 Abs 5095; Cyclacel data on file.*

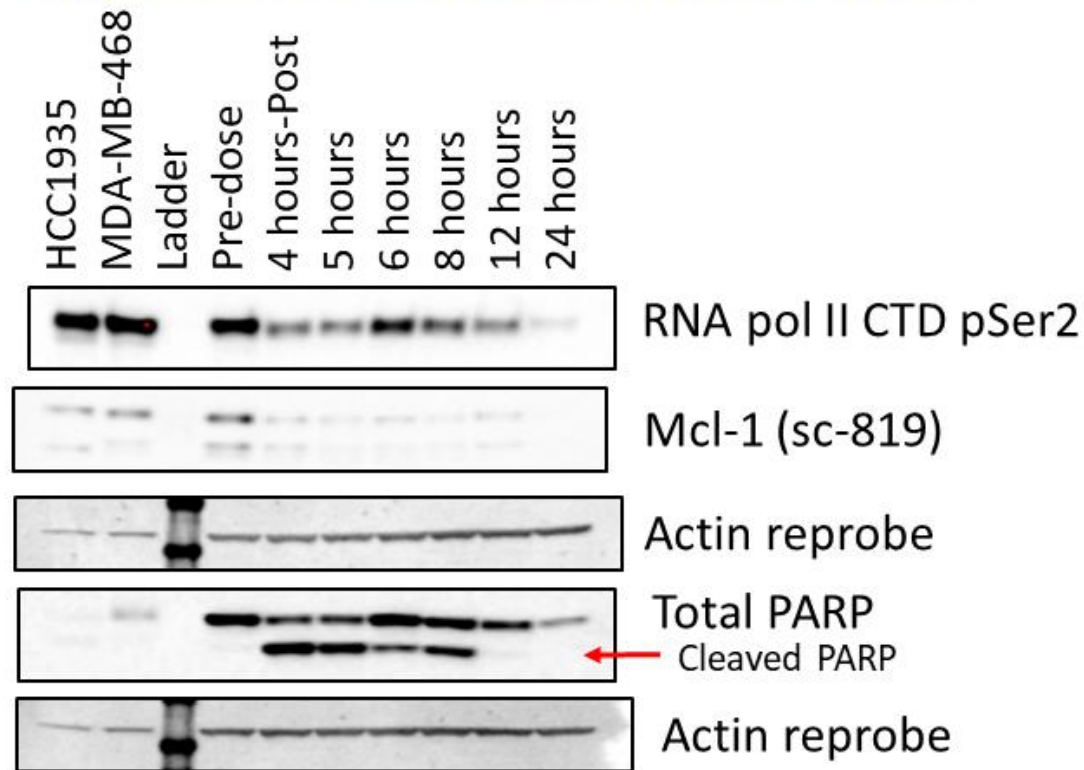
n=26 heavily pretreated patients with advanced solid tumors (13 in DL6 cohort RP2D)

- Durable **Mcl-1 suppression** >24h after single dose in 11/13 DL6 patients
- Anticancer activity in 6/13 patients (5 at RP2D)

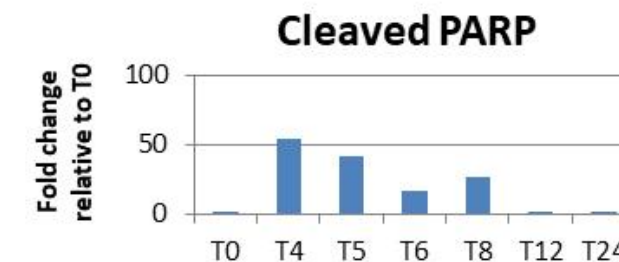
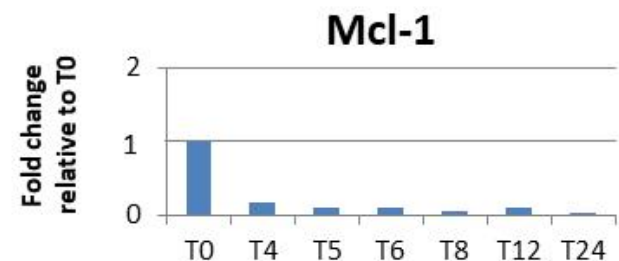
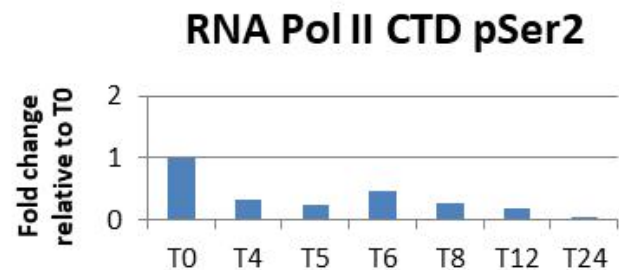
** Source: Cyclacel data on file.*

CYC065 First in Human Phase 1 part 1 (b)

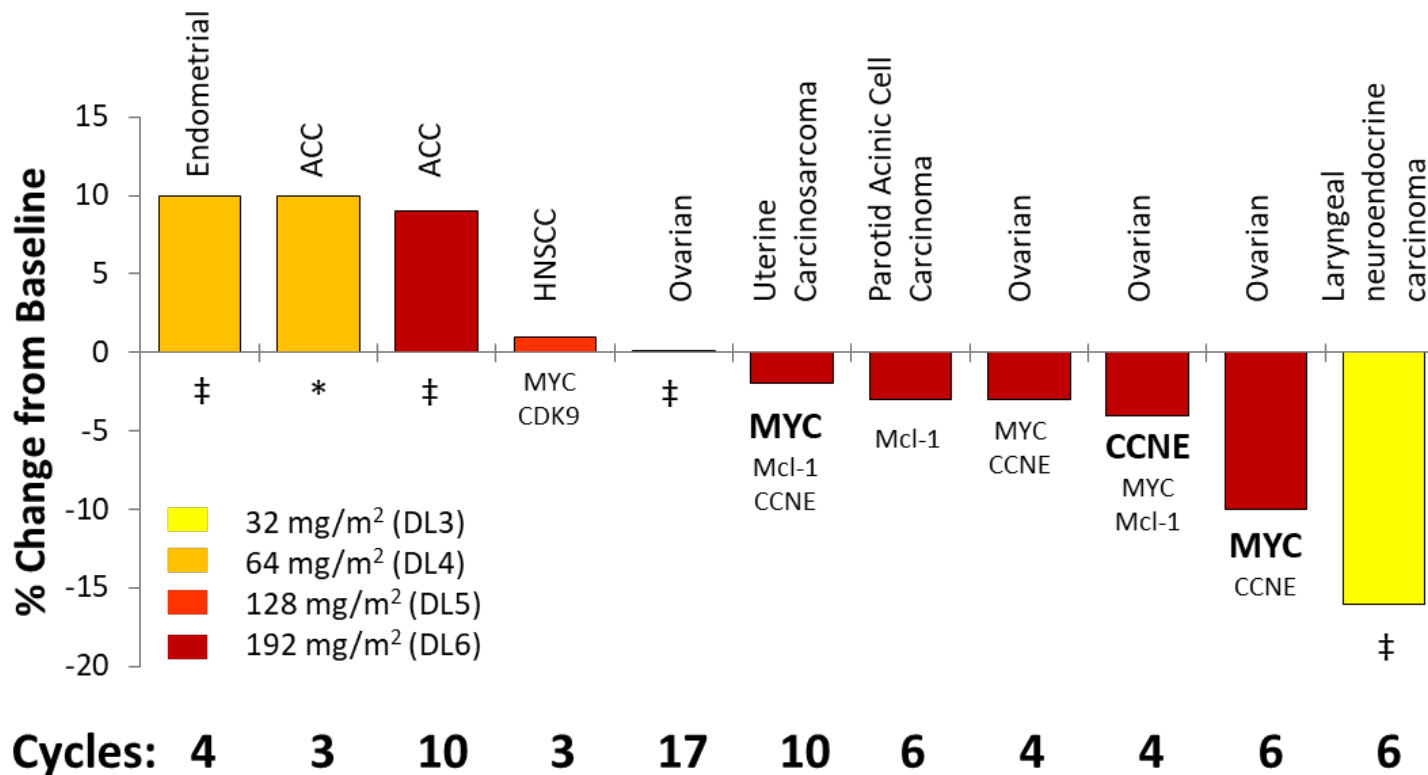
Target inhibition detectable at 24 hours



Patient 14 (192 mg/m²)



CYC065 First in Human Phase 1 part 1 (c)



Summary:

- 20/26 patients evaluable for response per RECIST 1.1
- 11/20 patients achieved stable disease (SD)
- 6/11 patients achieved SD for 4+ cycles

‡ no information; * complex deletions/gains. High copy gains shown in bold.

Do, Khanh T., et al, AACR Annual Meeting 2018.



Current (hematological malignancies):

- 1 Combination with **venetoclax** in patients with relapsed/ refractory CLL

Future (solid tumors):

- 2 Selected Mcl-1 \uparrow or MYC \uparrow solid tumors, i.e. neuroblastoma, ovarian, etc.
- 3 Selected Cyclin E \uparrow solid tumors, i.e. breast, ovarian, uterine (USC)

CDK4/6 isoform

palbociclib (PFE), ribociclib (NVS), abemaciclib (LLY)

Approved in combination with letrozole for ER +ve Her2 -ve advanced or met BC

trilaciclib (GTHX) Ph1/2

CDK2/9 transcriptional isoform

CYC065 (CYCC 2G) Ph1

seliciclib (CYCC 1G) Ph2

dinaciclib (pan CDK, MRK) Ph3

BAY1143572 (CDK9, BAY) Ph1

Other (pan CDK or selective):

SY1365 (CDK7, Syros);

voruciclib (CDK4/6/9, MEI Pharma)

* Source: Cyclacel data on file.

DNA Damage Response (DDR)

Overcoming Cancer DNA Repair & Evasion



Cancer cells evade Rx; block DNA repair; ultimately immortalize

Homologous recombination (HR) deficient (incl. BRCA mutant) cancers (breast, ovarian, prostate, pancreatic, etc.) have an Achilles heel:

- Inhibition of PARP enzymes is synthetically lethal: accumulation of SSBs converted to DSBs; DNA cannot be repaired by HR
- SoC: 3 approved PARP inhibitors (olaparib, niraparib, rucaparib)
- Significant unmet medical need remains

Sapacitabine is active in BRCA +ve patients with HR deficient cancers via a novel mechanism

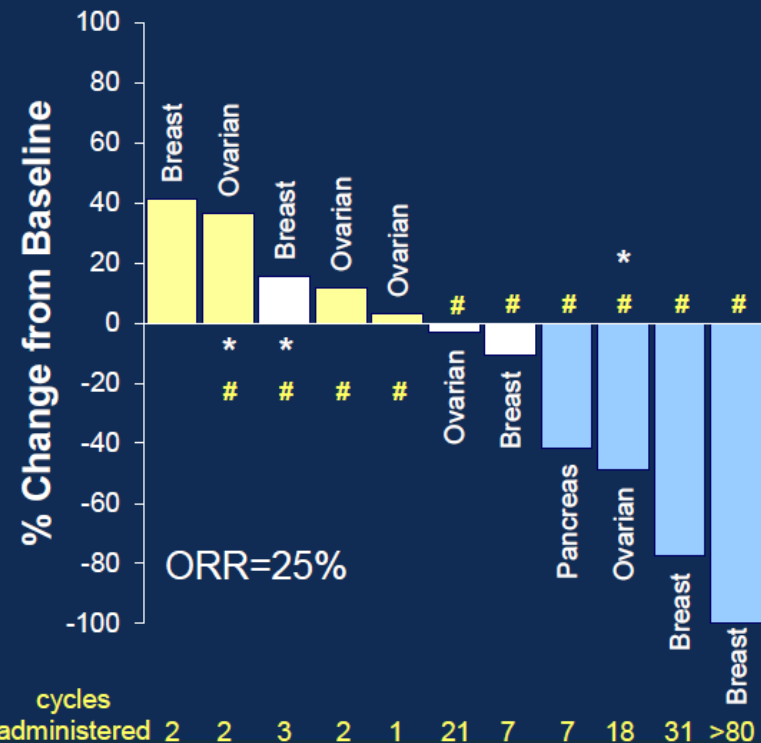
- Oral Rx induces SSBs and metabolizes into CNDAC via β -elimination reaction converted into DSBs that cannot be repaired by HR

Efficacy: durable CR, PR, SD (n=76, ASCO 2016) in BRCA +ve patients with breast, ovarian and pancreatic cancers

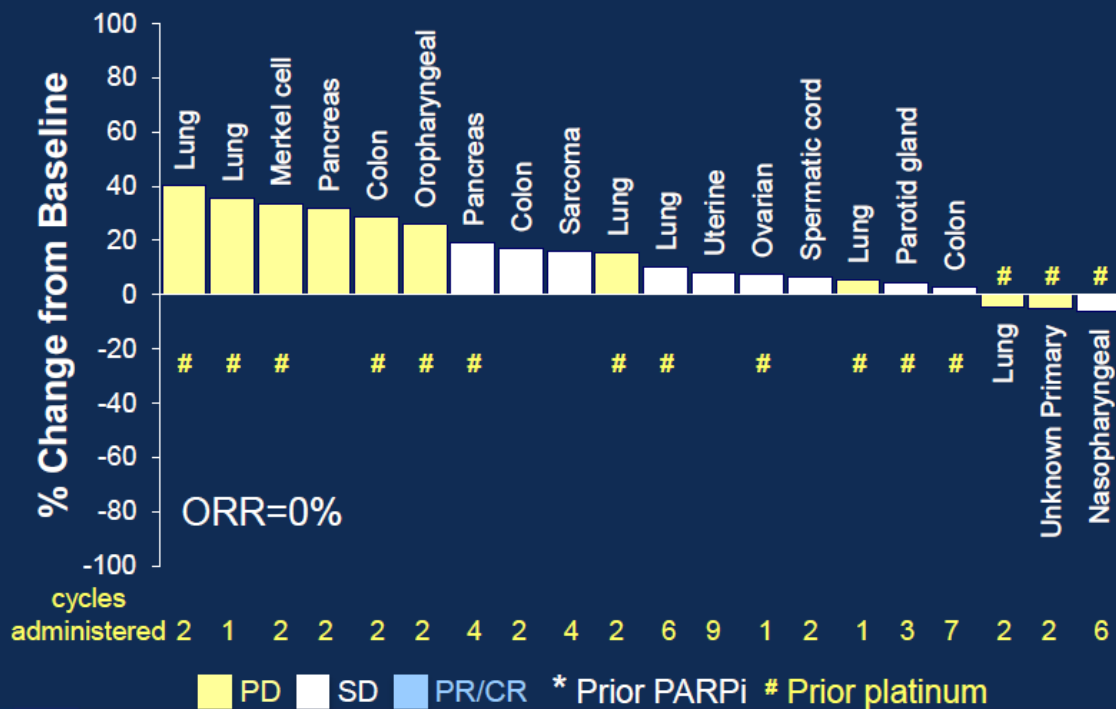
Potential to combine with PARP inhibitors

Best Response (all cycles)

Part 1 BRCA carriers



Part 1 Non-BRCA carriers



PRESENTED AT: ASCO ANNUAL MEETING '16

Presented by: Sara M. Tolaney, MD, MPH

* Source: Tolaney S et al, JCO 34, 2016 (suppl; abs. 2503).

HR def = 8% of all breast cancers *

Increase durability of PARPi response

Preclinical evidence of synergy for PARPi + sapacitabine*

Different MoAs may increase therapeutic index

Oral combination of **olaparib (Lynparza®) + sapacitabine**

Dana Farber IST ongoing (AstraZeneca & Cyclacel clinical supply)

* Source: Heeke A, et al, ASCO 2017. Liu et al Mol Cancer Ther 2016 16 2302; Cyclacel data on file. Lynparza® is a registered trademark of AstraZeneca.

Sapacitabine in AML (SEAMLESS Ph 3 data)

Optionality from potential regulatory submission



- ✓ Increase in median OS (primary endpoint) did not reach stat. sig.
- ✓ Doubling of CR rate (secondary endpoint)
- ✓ Improved median OS in large (2/3 of study) prospectively defined subgroup based on WBC level
- ✓ Oral presentation at ASH Annual Meeting 2017
- ✓ National regulatory consultations in various EU countries
 - EMA regulatory consultation
 - Determine submissibility

Source: Cyclacel press releases and data on file.

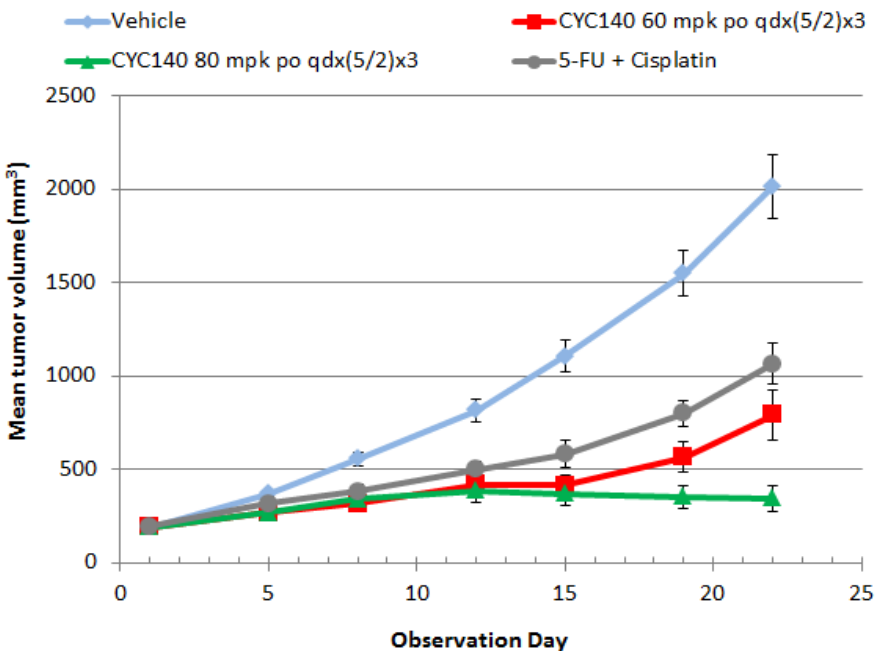
CYC140 PLK1 inhibitor

DNA damage checkpoint regulation

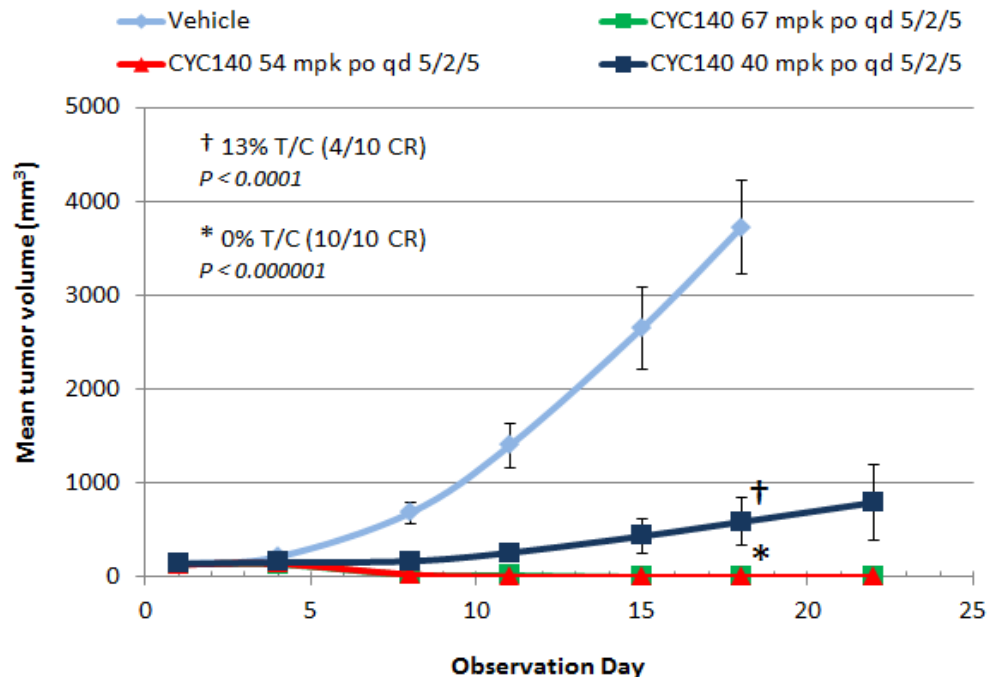


Potent and selective inhibitor (PLK1 IC₅₀ ~ 3 nM)

OE19 xenograft



HL60 promyelocytic leukemia xenograft



Source: Cyclacel data on file.

- Up to 170 patients with single agent or combinations of:
CYC065, CYC140, sapacitabine
- Risk Sharing: MDACC assumes patient costs; Cyclacel supplies drugs and limited support
- Payments to MDACC upon First Commercial Sale in indications studied

Financial Position & Capitalization



June 30, 2018 cash & cash equivalents: \$19.8m¹

Operating cash burn (excludes non-cash items)

- ✓ 2015: ~ \$14.5m annual¹
- ✓ 2016: ~ \$10.1m annual¹
- ✓ 2017: ~ \$ 7.5m annual¹
- 2018: ~ \$10.9m annual²

Fully diluted shares: ~ 20.0 million^{1,3}

No debt

1. 10 K, 10 Q
2. Company estimate
3. Common stock outstanding 12.0m

Key Milestones



- ✓ CYC065 Phase 1 data solid tumors
- ✓ Sapacitabine plus olaparib Ph 1b/2 BRCA +ve breast cancer
- ✓ CYC065 Ph 1b combination with venetoclax in RR CLL activated
- ✓ CYC140 (PLKi) Ph 1 first-in-human study activated
 - Start CYC065 studies in additional indications
 - CYC065 oral formulation development
 - Determine submissibility of sapacitabine in elderly AML

- Clinical stage, state-of-the-art oncology programs
- Targeting molecularly-defined patient populations
- Treat difficult cancers to overcome cancer cell resistance & DNA repair
- CDK inhibitors: validated drug class
- Competitively positioned
- Significant market opportunities



THANK YOU

Cyclacel Pharmaceuticals, Inc.

200 Connell Drive #1500
Berkeley Heights, NJ 07922
+1 (908) 517 7330

Contact: ir@cyclacel.com